



Natural Gas Facility Replacement Project

County Highway P, Racine



Spring 2022

We soon will upgrade natural gas facilities along County Highway P (McHenry Street) from South Street to Yahnke Road. This utility work will take place in advance of planned Racine County road work and is necessary to maintain natural gas service for customers along the route and to ensure natural gas system reliability in Burlington and the surrounding communities. We expect to begin work mid-April and be complete by early July. The utility construction zone is highlighted on the map on the back of this sheet.

Also, be aware that communications, sewer or other utilities may be working in this area before, during or after our work takes place.

Here's what you can expect:

Communication from We Energies

We will update you throughout the construction process to ensure you are aware of service impacts. During the final planning stages, all customers within the project boundaries will receive a series of letters in the weeks before construction. These letters will:

- Provide a general project description and include a We Energies contact name and number to call with questions.
- Inform you of how your property may be affected by this work.
- Prepare you for any necessary natural gas service interruption. If your service will be interrupted, a company representative will contact you in person to coordinate service interruption details.
- Describe your responsibility to locate and mark private utilities on your property.

Traffic impacts

Our construction activities will require excavation as well as traffic control measures, which are being coordinated with municipal officials and Racine County. These measures ensure your safety and the safety of our crews.

Work will be conducted in phases, which will require either partial or full closure of portions of County Highway P over the length of the project. Traffic detours will be posted for motorists to follow as necessary.

Access to local businesses and properties will remain open throughout the duration of the project, but may experience short-term interruptions as construction progresses. Our crews will coordinate directly with property owners before impacting any driveway access.

Please use caution while driving in these areas.

Questions? If you have questions about this project, please call us at: **877-380-0522**

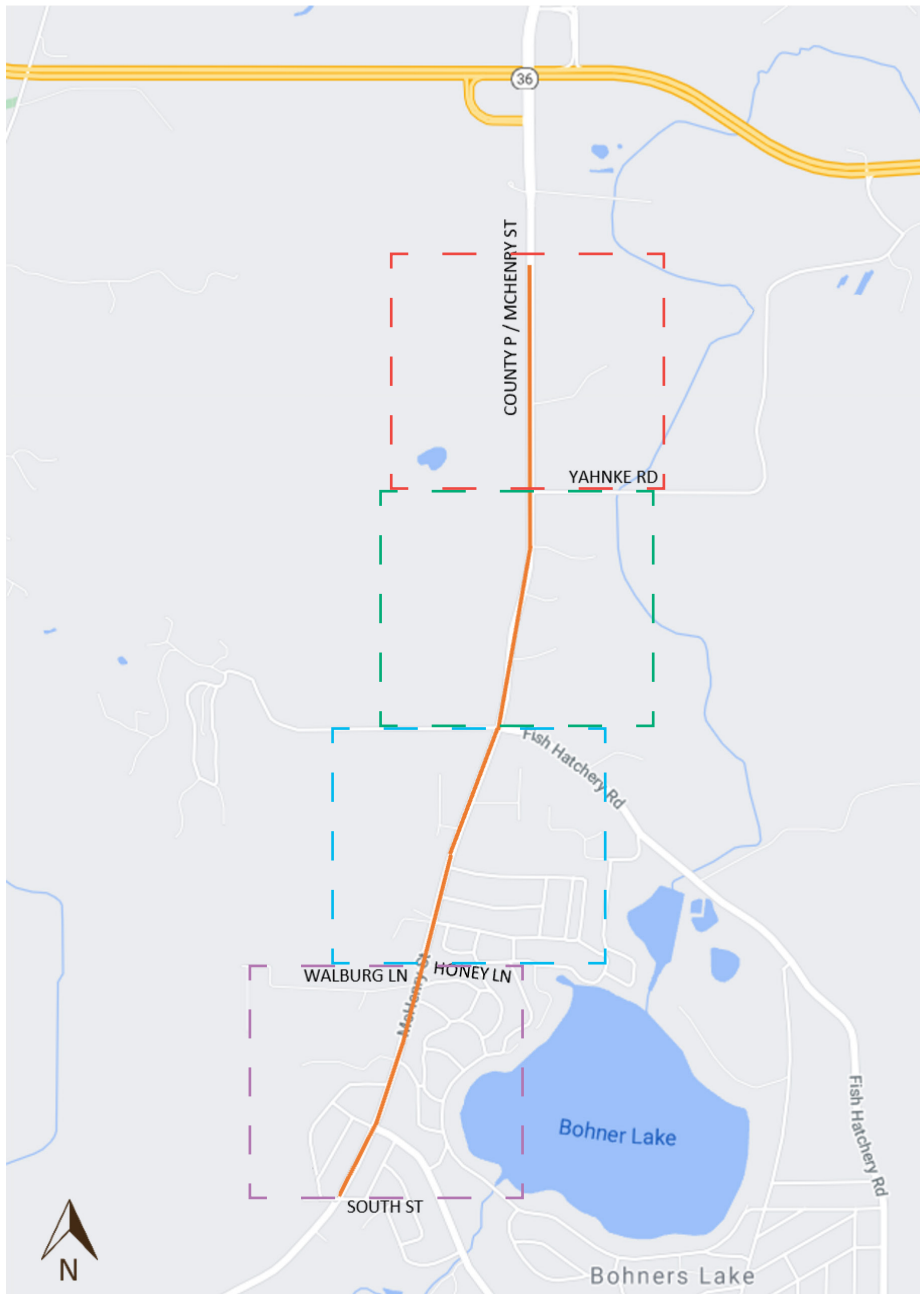


Natural Gas Facility Replacement Project

County Highway P, Racine



The utility construction zone is marked on the map below.
The work will be completed in the phases shown.



Planned work schedule

Note: dates are subject to change

- South Street to Walburg Lane
April 18 – May 6
- Walburg Lane to Fish Hatchery Road
May 9 – May 27
- Fish Hatchery Road to Yahnke Road
May 31 – June 17
- Yahnke Road to northern end
(approx. 0.5 miles)
June 20 – July 8